



SUPPORTERS GUIDE 2024/25



WELCOME TO HOME PARK

Welcome to Home Park and to Plymouth Argyle Football Club.

Here at Plymouth Argyle, we are passionate about providing all supporters, both home and away, with the best match-day experience possible. This guide has been created to give you an insight into your upcoming visit and to help you make the most of your time with us.

Whether you're a first time visitor or a Home Park veteran, this guide will provide you with all the details you need to make your trip as smooth and enjoyable as possible. From travel to tickets, family entertainment to food & drink, we have you covered.

FIRST TIME VISITORS MAKING THE MOST OF YOUR MATCH DAY

We want everyone to have the very best experiences when visiting us. To help you make the most of your match day, please follow our handy step-by-step guide below!

Before Match Day

✓ Take a look through this guide, our travel guide (available on our website) and watch our video guide (available on our website and YouTube channel), to find out everything we have to offer on match days and help you prepare for your visit

✓ Follow our social media channels to keep up-to-date with all the latest club news and receive important match day information (a full list of account handles is available on the "Contacts" page of this guide)

✓ Download the official Argyle App

✓ Make sure you have your tickets ready (if they are E-Tickets, add the QR codes to your digital wallet to keep them safe and for speedy entry!)

✓ Check out our dedicated match guide for your chosen fixture, available under "News" on our website (approx. 2 days prior to the game), for all the latest information relating to your specific match

✓ Email supporters@pafc.co.uk with any queries or if there is anything we can do to enhance or help you plan your visit

On Match Day

✓ Get here early! There is lots to see and do around the ground, so make sure you arrive in good time to maximise your visit

✓ Check our social media channels throughout the day for important news and match day experience information

✓ Tweet @PAFC_SLO with any questions (emails may not get picked up on the day but we'll be there on our social channels!)

✓ Speak to our Here to Help team outside the ground with any questions or queries

✓ Visit the Argyle Superstore to pick up your Argyle merchandise and be properly kitted out ready for kick off!

✓ Pick up a match programme - your perfect companion to the game - from the Superstore or sellers outside the ground

✓ Visit the Jack Leslie statue outside the stadium and learn about one of the most important stories in the club's history

✓ Visit the Fan Zone for a range of food & drink offerings, live music and family entertainment

✓ Meet Pilgrim Pete - no match day at Home Park is complete without meeting Pete! (full details of locations and timings found later in this guide)

✓ Enter the stadium within the first 30 minutes of gates opening to enjoy 25% off at all kiosks inside the ground

✓ Sing loud and proud, and enjoy the game! "Green Army!"

TRAVEL BY CAR

Home Park is easily accessible by car. Situated just off the A38, the stadium can be easily located along Outland Road. From the east, take the A38 to Plymouth and exit at Manadon roundabout, signposted "Plymouth Argyle and Ferry Port" and A386. Take the second exit at the roundabout, following the direction of the flyover, to the left. Travel a mile on this road, and Home Park will appear on your left.

If coming from the west, head towards Plymouth on the A38, and take the junction indicated above, but take the fifth exit, to the right. For Sat-Nav purposes, the postcode of the ground is PL2 3DQ.

In line with the club's values of being environmentally responsible and community focused, we are committed to reducing our carbon footprint and the impact that match days have on the environment. We encourage supporters, therefore, to car share wherever possible, or to consider using public transport to reach Home Park.





PARKING

The Milehouse park and ride car park, adjacent to Home Park, is a large and free car park. As it is used by those travelling into the city centre and by users of the nearby Life Centre, the car park is usually very busy and fills up extremely quickly on match-days, so very early arrival is essential to secure a space (the car park is usually full by approximately 10.30/11am ahead of a 3pm kick off).

As this car park becomes full very early on match-days, we recommend seeking alternative parking options in the city centre and in Plymouth's other park and ride car parks.

There are several pay and display car parks in and around the city centre. The closest of these to Home Park are at City Business Park (PL3 4BB) and Stuart Road (PL1 5LH), but there are also several others in the city centre at Western Approach (PL1 1AJ), Theatre Royal (PL1 2TR) and Drake's Circus (PL1 1EA).

Many buses operate from the nearby Royal Parade and Western Approach to Alma Road which is just a short walk from the ground.

Using park and ride services are also excellent options:

The George Park & Ride - PL6 7HB

Coypool Park Ride - PL7 4TB

Parking at these park and ride car parks is free, and there are dedicated football special bus services, provided by Plymouth Citybus, which run to and from Home Park on match-days to get you to the game. Please see the "Travel by Bus" section of this guide for full details and timetables.

We'd ask supporters to avoid residential areas and use one of the many designated parking areas outlined in this document.

FURTHER PARKING

Further parking has been made available for all home matches until the end of the season through event parking partner, Big Parking.

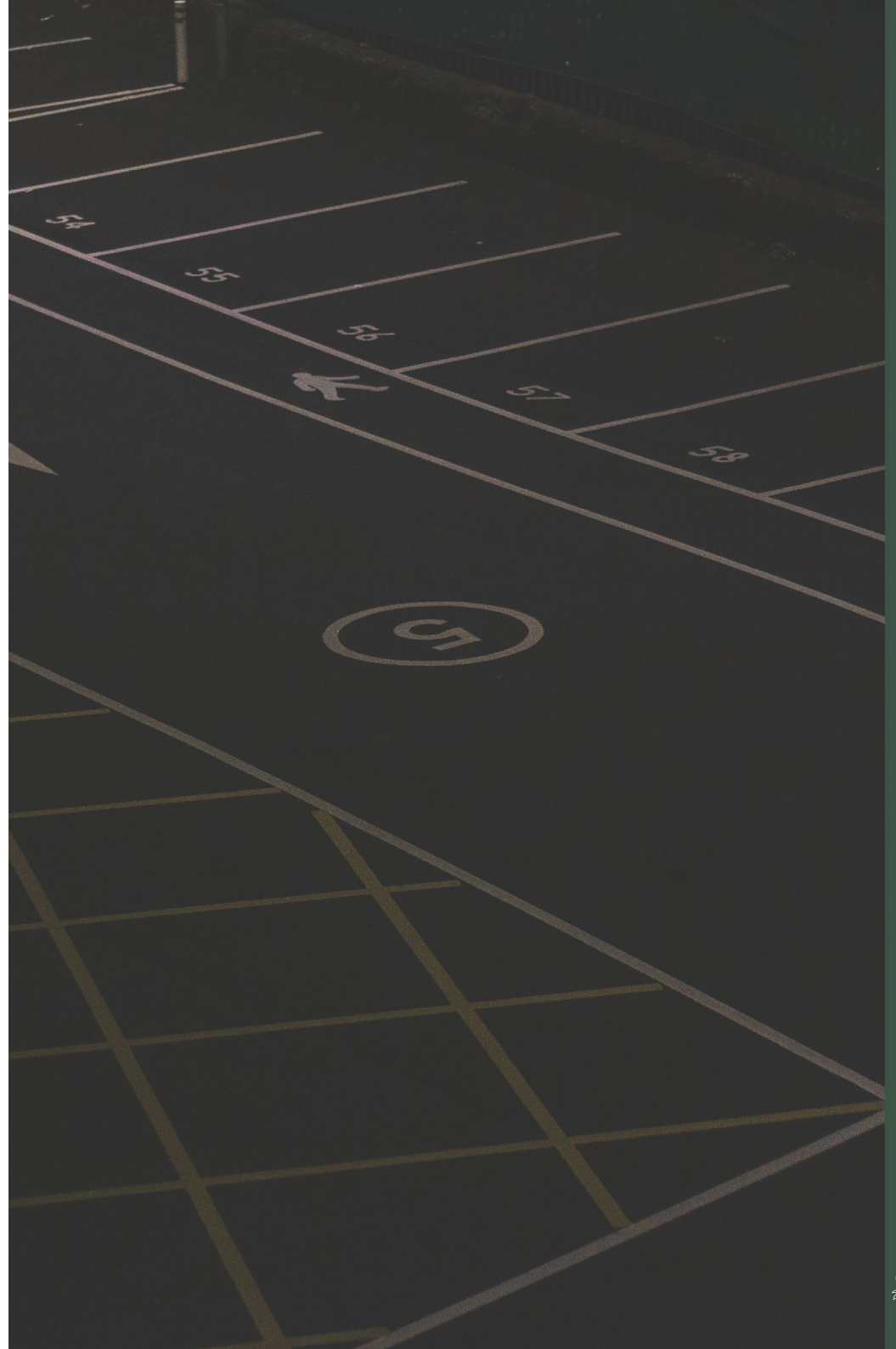
This pre-bookable option will offer supporters the opportunity to guarantee their parking space at locations in close proximity to the ground (approx. 5 min walk). Car parking starts at £10 per vehicle and can be purchased at <https://thebigparking.co.uk/> or by calling 02476 997605.

Car parking is available on a first-come, first-served basis and will be available to purchase at least four weeks before the match.

Any supporters requiring Accessible parking are advised to still contact the club directly.

Please be aware of road closures around the Stadium on a match day to further protect the safety of supporters. All of the Big Parking car parks are located outside of the road closure zone so your access and departure will not be affected by these measures.

Car parks will be open from three hours before kick off and will close one hour after the final whistle.





TRAVEL BY BUS & RAIL

By Bus/Coach

Plymouth Citybus run multiple routes to the stadium from across the city, including the club's new (for 23/24) match day special services, which offer convenient return journeys across 4 routes in the city, that drop off and pick up right outside Home Park. Please see our separate travel guide for full details (available in the "Fans" section of our website), with timetables also available on the next page of this document.

If travelling to Plymouth by coach, Plymouth Coach Station (PL1 1HZ) is situated in the City Centre and is approximately a 30 minute walk on foot, or a 5-10 minute taxi ride.

By Train

Plymouth Railway Station lies 1 mile away from Home Park and there is a paved walking route (taking approx. 20 mins) that takes you through Central Park straight to the stadium. Please note that although picturesque, a portion of the walk is up a steep hill.

Thank you for considering using public transport as your method of reaching Home Park. Travelling to us in this way greatly helps to reduce our collective carbon footprint and helps to minimise the impact that match days have on the environment and our local community.

CITYBUS MATCH DAY SPECIAL BUS TIMETABLES

12:30PM KICK OFF

Services will be running from several locations around the city, providing a connection to home park both before and after the match.



PA2 Plympton | Home Park

£6 return on the bus or via the Plymouth Citybus app

St Maurice, Brook Stores	1050	Home Park, Jack Leslie Way	1440
Wolverwood Lane, Yealmpstone Drive	1057	Plymouth Road, Woodford Avenue	1455
Steer Park, Walnut Drive	1101	St Mary's Bridge	1504
Chaddlewood, District Centre	1104	Chaddlewood, Westfield	1509
Chaddlewood, Westfield	1109	Chaddlewood, District Centre	1515
St Mary's Church	1115	Steer Park, Walnut Drive	1519
Plymouth Road, Woodford Avenue	1120	Wolverwood Lane, Yealmpstone Drive	1522
Home Park, Jack Leslie Way	1135	St Maurice, Brook Stores	1525

PA3 George Park & Ride | Home Park

£5 return on the bus or via the Plymouth Citybus app

George Junction, Park & Ride	1040	1140	Home Park, Jack Leslie Way	1440
Crownhill Low Level	1048	1148	Crownhill Low Level	1455
Home Park, Jack Leslie Way	1103	1203	George Junction, Park & Ride	1510

PA4 Coypool Park & Ride | Home Park

£5 return on the bus or via the Plymouth Citybus app

Marsh Mills, Coypool P&R	1040	Home Park, Jack Leslie Way	1440
Peverell Morrisons	1050	Drake Circus, Charles Street	1450
Home Park, Jack Leslie Way	1100	Marsh Mills, Coypool P&R	1505

PA5 Plymstock | Home Park

£6 return on the bus or via the Plymouth Citybus app

Elburton Methodist Church	1050	Home Park, Jack Leslie Way	1440
Elburton, Blackstone Close	1052	Railway Station	1449
Staddiscombe, The Staddy	1055	Charles Street	1452
Holmwood Ave, Southgate Ave	1058	Prince Rock, Higher Stert Terrace	1457
Plymstock, Fire Station	1105	Oreston, Rollis Park Road	1504
Oreston, Rollis Park Road	1109	Plymstock, Broadway West	1509
Prince Rock, Elliott Road	1116	Holmwood Ave, Southgate Ave	1514
Charles Street	1121	Staddiscombe, The Staddy	1517
Railway Station	1126	Elburton, Charnhill Way	1521
Home Park, Jack Leslie Way	1135	Elburton, Village	1525

CITYBUS MATCH DAY SPECIAL BUS TIMETABLES

3PM KICK OFF

Services will be running from several locations around the city, providing a connection to home park both before and after the match.



PA2 Plympton | Home Park

£6 return on the bus or via the Plymouth Citybus app

St Maurice, Brook Stores	1320	Home Park, Jack Leslie Way	1710
Wolverwood Lane, Yealmpstone Drive	1327	Plymouth Road, Woodford Avenue	1725
Steer Park, Walnut Drive	1331	St Mary's Bridge	1734
Chaddlewood, District Centre	1334	Chaddlewood, Westfield	1739
Chaddlewood, Westfield	1339	Chaddlewood, District Centre	1745
St Mary's Church	1345	Steer Park, Walnut Drive	1749
Plymouth Road, Woodford Avenue	1350	Wolverwood Lane, Yealmpstone Drive	1752
Home Park, Jack Leslie Way	1405	St Maurice, Brook Stores	1755

PA3 George Park & Ride | Home Park

£5 return on the bus or via the Plymouth Citybus app

George Junction, Park & Ride	1310	1410	Home Park, Jack Leslie Way	1710
Crownhill Low Level	1318	1418	Crownhill Low Level	1725
Home Park, Jack Leslie Way	1333	1433	George Junction, Park & Ride	1740

PA4 Coypool Park & Ride | Home Park

£5 return on the bus or via the Plymouth Citybus app

Marsh Mills, Coypool P&R	1310	1405	Home Park, Jack Leslie Way	1710
Peverell Morrisons	1320	1415	Drake Circus, Charles Street	1720
Home Park, Jack Leslie Way	1330	1425	Marsh Mills, Coypool P&R	1735

PA5 Plymstock | Home Park

£6 return on the bus or via the Plymouth Citybus app

Elburton Methodist Church	1320	Home Park, Jack Leslie Way	1710
Elburton, Blackstone Close	1322	Railway Station	1719
Staddiscombe, The Staddy	1325	Charles Street	1722
Holmwood Ave, Southgate Ave	1328	Prince Rock, Higher Stert Terrace	1727
Plymstock, Fire Station	1335	Oreston, Rollis Park Road	1734
Oreston, Rollis Park Road	1339	Plymstock, Broadway West	1739
Prince Rock, Elliott Road	1346	Holmwood Ave, Southgate Ave	1744
Charles Street	1351	Staddiscombe, The Staddy	1747
Railway Station	1356	Elburton, Charnhill Way	1751
Home Park, Jack Leslie Way	1405	Elburton, Village	1755



CITYBUS MATCH DAY SPECIAL BUS TIMETABLES

7:45PM KICK OFF

Services will be running from several locations around the city, providing a connection to home park both before and after the match.

For matches with a kick off time of 8pm, please use the 19.45 kick off timetable and add 15 minutes to each time



PA2 Plympton | Home Park

£6 return on the bus or via the Plymouth Citybus app

St Maurice, Brook Stores	1810	Home Park, Jack Leslie Way	2200
Wolverwood Lane, Yealmpstone Drive	1817	Plymouth Road, Woodford Avenue	2215
Steer Park, Walnut Drive	1821	St Mary's Bridge	2224
Chaddlewood, District Centre	1824	Chaddlewood, Westfield	2229
Chaddlewood, Westfield	1829	Chaddlewood, District Centre	2235
St Mary's Church	1835	Steer Park, Walnut Drive	2239
Plymouth Road, Woodford Avenue	1840	Wolverwood Lane, Yealmpstone Drive	2242
Home Park, Jack Leslie Way	1855	St Maurice, Brook Stores	2245

PA3 George Park & Ride | Home Park

£5 return on the bus or via the Plymouth Citybus app

George Junction, Park & Ride	1800	1900	Home Park, Jack Leslie Way	2200
Crownhill Low Level	1808	1908	Crownhill Low Level	2215
Home Park, Jack Leslie Way	1823	1923	George Junction, Park & Ride	2230

PA4 Coypool Park & Ride | Home Park

£5 return on the bus or via the Plymouth Citybus app

Marsh Mills, Coypool P&R	1800	Home Park, Jack Leslie Way	2200
Peverell Morrisons	1810	Drake Circus, Charles Street	2210
Home Park, Jack Leslie Way	1820	Marsh Mills, Coypool P&R	2225

PA5 Plymstock | Home Park

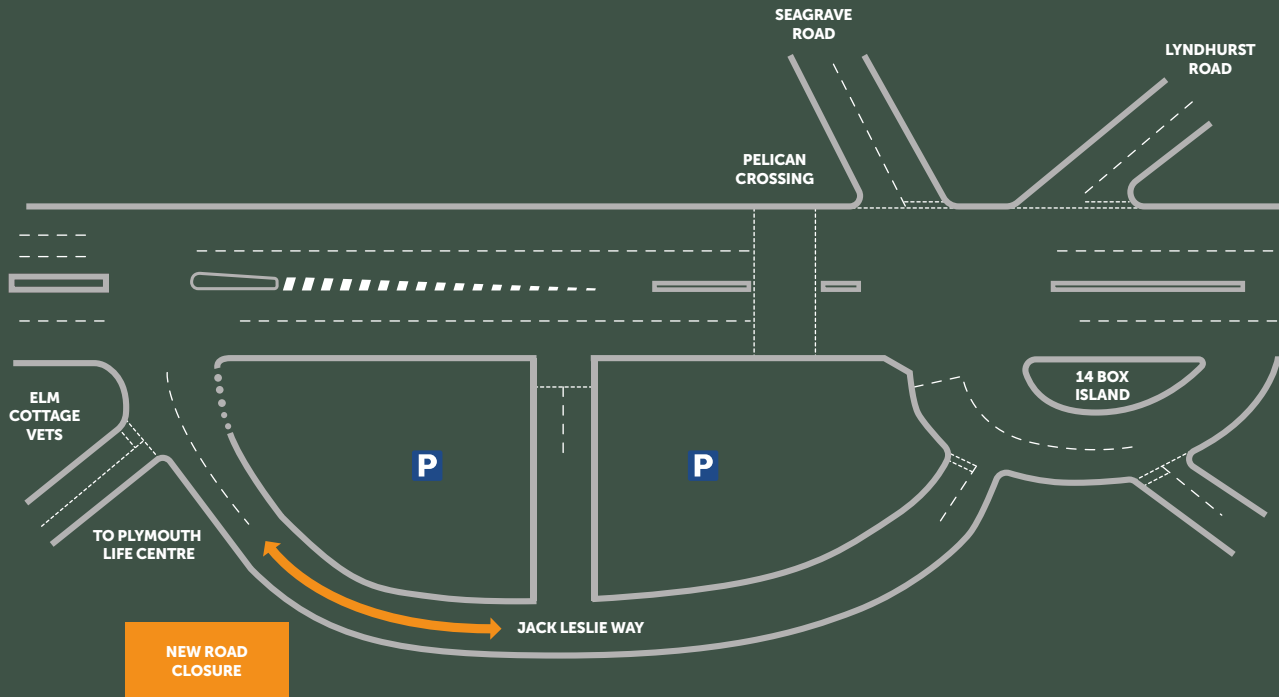
£6 return on the bus or via the Plymouth Citybus app

Elburton Methodist Church	1810	Home Park, Jack Leslie Way	2200
Elburton, Blackstone Close	1812	Railway Station	2209
Staddiscombe, The Staddy	1815	Charles Street	2212
Holmwood Ave, Southgate Ave	1818	Prince Rock, Higher Stert Terrace	2217
Plymstock, Fire Station	1825	Oreston, Rollis Park Road	2224
Oreston, Rollis Park Road	1829	Plymstock, Broadway West	2229
Prince Rock, Elliott Road	1836	Holmwood Ave, Southgate Ave	2234
Charles Street	1841	Staddiscombe, The Staddy	2237
Railway Station	1846	Elburton, Charnhill Way	2241
Home Park, Jack Leslie Way	1855	Elburton, Village	2245

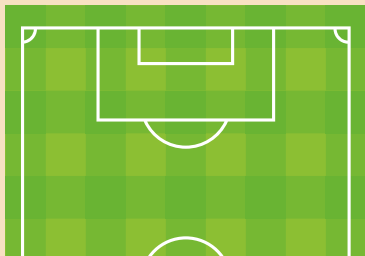


TRAVEL BY COACH

VISITING COACH DIRECTIONS



HOME PARK



If you are visiting by coach, please note that there is no coach parking available at Home Park.

Please be aware that a road closure along Jack Leslie Way (see map opposite) is in place from 3 hours before Kick Off until 1 hour after the final whistle, to ensure the safety of supporters on match days. Coaches will therefore be unable to drop off passengers directly outside the stadium and will need to make alternative arrangements for dropping off and parking. Club stewards will be on hand near the start of the road closure to assist if required.

Away supporter coaches can return to the stadium 1 hour after kick off, to reverse along the concourse to the away end (directed by club stewards), so that they will be directly outside the away turnstiles ready for supporters of the visiting team to depart when the match finishes.

Some venues which provide coach parking can be found below. Please note it will be the coach company/trip organiser's responsibility to contact the below locations in advance if parking is required, not PAFC's.

Plymouth Life Centre

(directly adjacent to the stadium – up to 5 coach spaces available)

40 Mayflower Drive, Plymouth, PL2 3DG
01752 606900

Plymouth Citybus Depot

Off Alma Road, PL3 4HQ.
To book, call: 01752 264231.

Plymouth Pavillions

Millbay Road, Plymouth, PL1 3LF
To book, email: enquiries@theticketstore.co.uk

Stagecoach South West

The Ride, Plymouth, PL9 7JT
01752 264215



HOME PARK STADIUM

Home Park stadium is located just off Outland Road and adjacent to Plymouth Life Centre and Milehouse Park & Ride car park. The stadium seats home fans in the newly renovated Beacon Electrical Mayflower Stand and in the Babcock Devonport and Portcullis Legals Lyndhurst Road Stands, while away supporters enjoy the match from the Kawasaki Barn Park End (blocks 21 – 23).

Family seating is located in blocks A - G in the Lower Mayflower Stand, providing close proximity to the Fan Zone, Argyle Superstore, Ticket Office and Pilgrim Pete, as well as excellent views of the pitch.

If it's your first time visiting us, or have any queries regarding family entertainment, the match day experience at Argyle or how to make the most of your visit, please contact our Visitor Experience team via supporters@paafc.co.uk.





TICKETING

Home supporters

The easiest way to buy tickets is through our e-ticketing site, which can be accessed 24 hours a day at www.argyletickets.com. For each home match, we have an interactive seating plan which shows exactly what seats are available and at what prices.

Tickets can be sent to you as e-tickets. You can also remove the hassle and add the tickets digitally to your Apple/Google wallet - allowing you to use your smartphone at the turnstiles: simply select the option for digital tickets when making your purchase and choose "add to Apple wallet or Google Pay". You can then access your ticket via your digital wallet on match day, with no need to visit the Ticket Office!

Alternatively, the Home Park Ticket Office team will be happy to talk you through the available

seating options for your chosen match and take your booking via telephone (01752 907700) or in person at the Ticket Office. This is particularly useful if you have any specific seating requirements or would like to make a group booking.

Family Seating

Family seating is located in blocks A - G in the Lower Mayflower Stand, offering excellent views of the pitch as well as close proximity to the Fan Zone, Argyle Superstore, Ticket Office and Pilgrim Pete.

There's plenty going on around the ground on match days for families. We hope the information in this guide offers a flavour of what will be on offer, but please get in touch via supporters@pafc.co.uk with any other queries or if there is anything else we can do to help you prepare for your visit!

Away supporters

Tickets are to be bought in advance via your own club's ticket office. However, dependent on away fan ticket sales, we often operate a pay on the day system for visiting supporters through the away end turnstiles. This can vary from game to game, so do check with us before you travel.

Away seating is in the Kawasaki Barn Park End of the stadium, which includes wheelchair spaces.

Turnstiles typically open 1.5 hours prior to kick-off. Visiting supporters who have arranged for their tickets to be collected from Home Park will find these available from the ticket collection booth outside the away turnstiles.



MERCHANDISE

Looking to pick up this year's kit, a souvenir from your visit, or the perfect gift for the Argyle fan in your life? Stocking a wide range of replica kits, training and fashion wear, accessories, homeware and more, the Superstore is your ultimate Argyle shopping destination.

Located between the corner of the Babcock Devonport End and Beacon Electrical Mayflower Grandstand, behind the traditional Home Park turnstiles (which were once the main entry point to the stadium!), the Argyle Superstore is open from 9am on match days until 30 minutes after the final whistle.

There is also a dedicated retail outlet on the corner of the Babcock Devonport End and Portcullis Legals Lyndhurst Road Stand, selling Puma merchandise - including the Pilgrims' replica kit and training wear. Inside the ground, you'll find a merchandise stand inside both the Babcock Devonport and Portcullis Legals Lyndhurst Road Stand concourses.

Don't forget you can shop online 24/7 at www.argylesuperstore.co.uk, with delivery and in-store click and collect available. If you choose for your order to be collected at Home Park on a match day, please ensure you complete your order at least three days prior to the match.



COUNTDOWN TO KICK OFF

Saturday 3pm Kick offs

Tuesday 7.45pm Kick offs

9am	9am	Home Park Ticket Office and Argyle Superstore opens
12pm	5pm	Mayflower Fan Zone opens, including the Family Activity Zone (activities are free for all and are open to both home and away supporters)
1.30pm	6.15pm	Turnstiles open for entry into Home Park
2.00pm	6.45pm	Teams are announced
2.15pm	7.00pm	Players' warm up begins
2.55pm	7.40pm	Teams emerge from the tunnel
3pm	7.45pm	Kick off



FAN ZONE

We are delighted to be able to welcome supporters to our new Fan Zone, which is now open on home match days in the Mayflower Quarter (located just up from the Argyle Superstore and Ticket Office - please see our "Stadium Map" page for exact location), from 12pm.

In partnership with C&G Catering, the Fan Zone offers an array of food and drink stalls, supplementing the product range available at the kiosks inside Home Park and offering the Green Army an even wider choice of delicious hot food, snacks and alcoholic and soft beverages. The Argyle Community Trust will also provide a pizza van in the 2024/25 season, further increasing the variety for supporters.

Please note that the concessions inside the Fan Zone will change from game-to-game to provide supporters with even greater choice across the season! Please contact us via supporters@paafc.co.uk to find out what will be available when you're coming!

A big screen will show live sport, perfect for those who just can't wait until kick off to get their sporting fix, while live music will also be on offer.

It's also the new home for our Family Zone, hosted by the Argyle Community Trust, making it the perfect place for families to enjoy a range of games and activities and soak up the pre-match atmosphere.

Look out for Pilgrim Pete too, who will make a mischievous appearance in the Fan Zone between (approx.) 1.15pm-1.30pm!

Open to all supporters pre-match with a valid match ticket, whether you are a home or away fan! Beacon Electrical Mayflower Grandstand ticket holders will also be able to gain access at half-time, to further complement the food and drink offering during the mid-game interval. Come and join us!

FAMILY ENTERTAINMENT

There is lots to see and do for families at Home Park on match days!

The Argyle Community Trust hosts a special Family Activity Zone within the Mayflower Fan Zone, which opens from 12pm for a 3pm kick-off.. Both home and away fans are very welcome to come and take part in and enjoy a variety of sporting activities, including:

- 3 vs 3 blow-up pitch
- Penalty Shoot-out/Target goal
- Inflatable football darts
- Shooting speed test
- Giant Jenga

Please note that activities do vary from match to match and the above list is not exhaustive, but designed to provide a flavour of the fun we provide.

All activities are free to access for all children, with no need to book – just turn up and enjoy! Feel free to come and join us or, to find out more information, please get in touch via: supporters@pafc.co.uk

Families won't want to miss the chance to meet our mischievous mascot, Pilgrim Pete! Pete can be found in the Mayflower Fan Zone from 1.15pm-1.30pm, at the Argyle Superstore from 1.30pm-1.45pm, and roaming the pitch-side areas inside Home Park in the hour leading up to kick off (please note timings are approximate). Pete is always happy to stop for selfies and photos, so be sure to say hello!

The Argyle Superstore, which stocks a wide range of children's kits, fashion wear and accessories, is the perfect place to pick out a souvenir from your visit. You can even customise and create your own perfect Argyle gift! With the ability to design your own personalised keyrings, coasters, mugs, magnets and notebooks, there's sure to be something for every Argyle fan.

Families will also find a wide range of food & beverage options, including adult and child meal deals, available through our kiosks inside Home Park. There are also television screens throughout the stadium concourse areas, showing other fixtures before kick-off to keep you up-to-date with everything happening in the football world.





PILGRIM PETE

Our mischievous mascot, Pilgrim Pete, is famous for his pre-match antics around Home Park, and families won't want to miss out on the hilarity!

Pete can be found in the following areas on match days*:

Mayflower Fan Zone	1.15pm-1.30pm
Argyle Superstore	1.30pm-1.45pm
Pitch-side areas inside Home Park	2.15pm-2.45pm

Pete is always happy to stop for selfies and photos, so be sure to say hello - a visit to Home Park just isn't complete without meeting Pete!

*Please note all timings are approximate and those given are for a 3pm kick-off. For other kick off times, simply adjust the timings accordingly.

MATCH DAY CATERING

Our catering team offers a wide range of hot foods, snacks, soft drinks and alcoholic beverages for you to enjoy prior to kick-off and at half-time – with options to suit the whole family and every taste, there's sure to be something to tempt you!

We also offer meal deals across our range of hot food and beverage options, which offer significant savings versus purchasing each item individually. Available for both adults and children, be sure to ask our friendly kiosk staff about meal deal options to make sure you get the best deal!

We offer a 25% discount off all products at the kiosks inside Home Park, for the first 30 minutes after gates opening, so why not come early to enjoy all there is to see and do at Home Park and enjoy a discount on your refreshments!

Please see an indicative menu and pricing opposite for the 2024/25 season. Please note the menu relates to the concessions available inside Home Park, and exact product availability may vary (please be aware the menu at the external kiosks in the Beacon Electrical Mayflower Stand is slightly different - see next page for details).

HOT FOOD

Beef Burger	£6.25
Cheeseburger	£6.75
Add:	
Pickles	£1.00
Onions	£0.50
Hot dog	£6.75
(Bun, Hot dog sausage, pickles, onion, cheese sauce)	
Devon steak pasty	£5.50
Cheese and onion pasty	£5.50
Curried chicken pasty	£5.50
Pepper & veg pasty	£5.50
Sausage roll	£4.50
Vegan sausage roll	£4.50
Nachos box	£6.00
(Tortilla chips, salsa dip, cheese sauce, jalapeno peppers)	

SNACKS

Burts crisps	£2.00
Kit Kat Chunky, Mars or Yorkie	£2.00
Buttermilk choc bar	£2.00
(gluten free, dairy free, vegetarian)	
Haribo Tangfastics	£3.95

HOT DRINKS

Tea	£3.00
Coffee	£3.00
Hot Chocolate	£3.00
Bovril	£3.50

DRINKS

Fruit shoot	£2.00
Water	£2.00
Monster Energy Drink	£4.20

SOFT DRINKS

BUY 4 - £22

Coca-Cola	£3.20
Coke Zero	£3.20
Diet Coke	£3.20
Fanta	£3.20
Sprite	£3.20

ALCOHOL

BUY 1 - £5.75

BUY 4 - £22

Carlsberg Lager 500ml
Thatchers Gold 500ml
Thatchers Haze 440ml
Thatchers Blood Orange 440ml
Thatchers Cloudy Lemon 440ml
Tribute 500ml

BUY 1 - £6.75

BUY 4 - £26

Pink Gin & Tonic 250ml
Absolut & Sprite 250ml
Rum & Coke 250ml
Jack Daniels & Coca-Cola 250ml
Canned Wine Pale Rose 187ml
Canned Wine Malbec 187ml

MEAL DEALS

CHAMPION'S MEAL

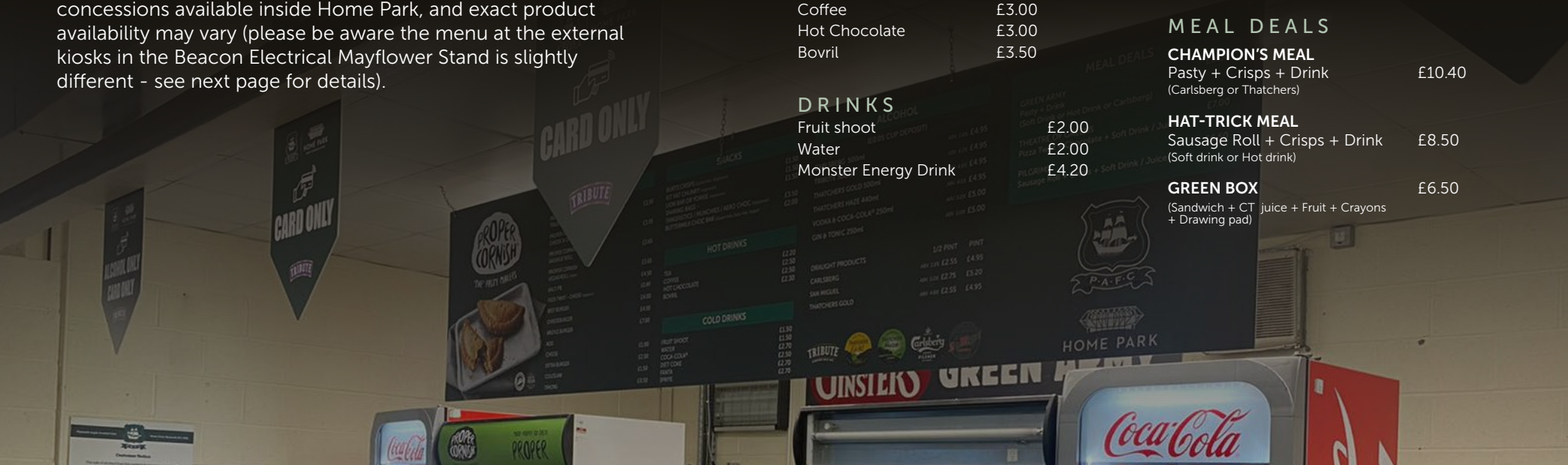
Pasty + Crisps + Drink (Carlsberg or Thatchers)	£10.40
---	--------

HAT-TRICK MEAL

Sausage Roll + Crisps + Drink (Soft drink or Hot drink)	£8.50
---	-------

GREEN BOX

(Sandwich + CT juice + Fruit + Crayons + Drawing pad)	£6.50
---	-------



MATCH DAY CATERING

Supporters seated in the Beacon Electrical Mayflower Stand will enjoy the following menu from the stand's external kiosks

HOT FOOD

Devon steak pasty	£5.50
Cheese and onion pasty	£5.50
Curried chicken pasty	£5.50
Pepper & veg pasty	£5.50
Sausage roll	£4.50
Vegan sausage roll	£4.50

MEAL DEALS

THE GAFFER MEAL

Pasty + Crisps + Drink (Carlsberg or Thatchers)	£10.40
--	--------

HAT-TRICK MEAL

Sausage Roll + Crisps + Drink (Soft drink or Hot drink)	£8.50
--	-------

GREEN BOX

(Sandwich + CT juice + Fruit + Crayons + Drawing pad)	£6.50
--	-------

SNACKS

Burts crisps	£2.00
Kit Kat Chunky, Mars or Yorkie	£2.00
Buttermilk choc bar (gluten free, dairy free, vegetarian)	£2.00
Haribo Tangfastics	£3.95

HOT DRINKS

Tea	£3.00
Coffee	£3.00
Hot Chocolate	£3.00
Bovril	£3.50

DRINKS

Fruit shoot	£2.00
Water	£2.00
Monster Energy Drink	£4.20

SOFT DRINKS

BUY 4 - £22

Coca-Cola	£3.20
Coke Zero	£3.20
Diet Coke	£3.20
Fanta	£3.20
Sprite	£3.20

ALCOHOL

BUY 1 - £5.75

BUY 4 - £22

Carlsberg Lager 500ml
Thatchers Gold 500ml
Thatchers Haze 440ml
Thatchers Blood Orange 440ml
Thatchers Cloudy Lemon 440ml
Tribute 500ml

BUY 1 - £6.75

BUY 4 - £26

Pink Gin & Tonic 250ml
Absolut & Sprite 250ml
Rum & Coke 250ml
Jack Daniels & Coca-Cola 250ml
Canned Wine Pale Rose 187ml
Canned Wine Malbec 187ml

DRAUGHT PRODUCTS

Carlsberg
1/2 £3.25 Pint £5.90 2 Pint £11.50
San Miguel
1/2 £3.45 Pint £6.20 2 Pint £12
Tribute Shankey
1/2 £3.55 Pint £6.10 2 Pint £12
Thatchers Gold
1/2 £3.15 Pint £5.65 2 Pint £11



MATCH DAY PROGRAMME

Our award-winning match day programme, Argyle, is available for just £3.50 and contains exclusive interviews, features, action pictures and stories from across the Argyle family. Covering both the home and away sides, it's the essential companion to the day's game for all supporters, no matter who you support! There is also a dedicated children's section, containing fun quizzes, trivia, competitions and more.

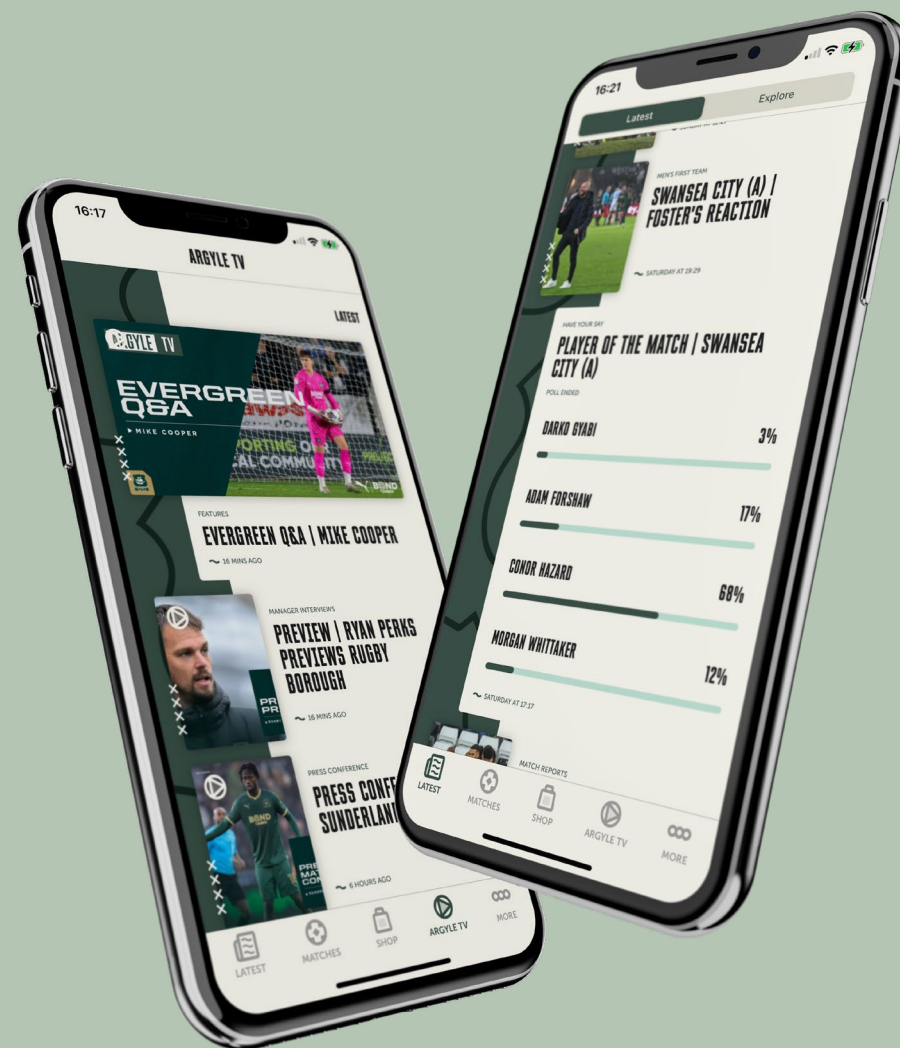


ARGYLE APP

It's not just team news and ticket information available on the official Argyle App, there are lots of fun ways to enhance your match day and prove your football knowledge to the rest of your family!

Take our pre-match quiz to see how much you really know about the opposition, and don't forget to vote for your Man of the Match from our shortlist of four contenders straight after the final whistle.

Download the App today and make sure you're match day ready!





HERE TO HELP

We are here to help you enjoy the best match day experience possible and to make the most of your visit to Home Park.

Should you have any questions, need help with directions or just want to find out what's going on around the ground, don't hesitate to speak to our friendly Here to Help team! As passionate members of the Green Army themselves, they'll be delighted to chat to you about all things Argyle, answer any questions you have and let you know about everything going on around Home Park! Whether it's advising on the perfect gift from the Superstore, letting you know which band is playing in the Fan Zone or where is best to meet Pilgrim Pete, the team is dedicated to helping you maximise your match day experience.

Easily identifiable through their purple high-viz jackets, you can find the team outside Home Park from 1pm on match days.

The team will also be on hand at the end of the game, if you have any feedback you'd like to provide on your match day experience. They will be outside the stadium as you exit, and at the information booth on the edge of the Milehouse Park & Ride car park, for 15 minutes after the full time whistle.

DISABILITY INFORMATION & ACCESS

Plymouth Argyle Football Club is a passionate advocate of access for all and champions inclusivity and diversity, in line with our club values of Respect and of being Fan and Community Focused. We warmly embrace and welcome all supporters, irrespective of any disabilities they may have, whether visible or hidden.

To help all supporters enjoy the best match day experience possible, the club employs a dedicated Disability Liaison Officer and Disability Ambassadors, who are on hand to assist on a match day - keep an eye out for staff wearing purple high-vis jackets or contact your nearest steward, who can put you in touch. For any assistance ahead of match day, please contact the team via disability@pafc.co.uk.

Home Park is an accessible stadium, with wheelchair spaces available in all stands around the ground. Accessible parking spaces are available in the park & ride car park adjacent to the stadium, though these are limited and cannot be booked or reserved in advance and are available on a first come first served basis, so early arrival is essential to secure a space.

To help supporters with visual impairments make the most of their match day experience, our Soccer Sight live commentary service is on-hand to provide a highly professional and entertaining audio description of the action. Supporters interested in using this service can book on a first come, first served basis by emailing disability@pafc.co.uk ahead of your visit.

Sensory packs, which include a drawstring bag, ear defenders, fidget spinners, a sensory ball, an awareness card and lanyard, as well as further match-day information, are now available free of charge. The packs have been designed for supporters - particularly children - with autism, who attend matches, to make the match-day experience more accessible, comfortable and enjoyable.

Supporters interested in receiving a pack can collect a sensory pack from the information booth on the edge of the Milehouse park and ride car park. Packs are free of charge for season ticket holders, and are available for a £10 deposit for non-season ticket holders (refundable upon the pack being returned intact).





SAFEGUARDING

Plymouth Argyle Football Club is committed to providing a positive, inclusive experience for young people who come into contact with the Argyle Family. We are committed to safeguarding and promoting the welfare of young people and adults at risk and expect all staff, volunteers and visitors to share this commitment.

If you have any safeguarding concerns at PAFC, please email the Dedicated Safeguarding Officer at safeguarding@pafc.co.uk, or speak to any member of staff.

Plymouth Argyle has a comprehensive safeguarding strategy, policies, protocols and case management system to prevent abuse and promote the wellbeing of our young people, staff, volunteers and visitors.

For more information on safeguarding at PAFC, please visit: www.pafc.co.uk/fan-information/safeguarding

Reporting: We have a zero tolerance approach to anyone who thinks it is acceptable to bully, intimidate or discriminate against a fellow supporter, player or member of club staff. We encourage supporters to report any instance of inappropriate comments, chanting or behaviour at matches. You can do this by speaking to the nearest steward, or discreetly to the club, via our match day reporting service: Text 66777 with the word 'ARGYLE' followed by your message.



**FOOTBALL IS A
GAME FOR ALL.**



HER GAME TOO

Plymouth Argyle is proud to be partnered with Her Game Too in a bid to make Home Park Stadium as safe, welcoming, and inclusive as possible for female supporters.

If you would like to meet people for a pre-match social or to find out more about the campaign, contact our Her Game Too Ambassador via X (Twitter) @Megan_Stone19 and advocates @hayleypafc @jonancekivell. To report incidents of discrimination please speak to our ambassador team or to report anonymously text HERGAME + your message to **66777**.

More information can be found at hergametoo.co.uk

#HERGAMETOO | @HERGAMETOO





X



FOOTBALL IS A GAME FOR ALL.

REPORT SEXIST ABUSE:

TEXT 'HERGAME' TO 66777 to discreetly report discrimination at the stadium.



@HERGAMETOO

#HERGAMETOO

ABOUT US.

#HerGameToo is run by passionate female football fans, aiming to kick sexism out of football. We strongly believe **football is a game for all**, and are actively working closely with football clubs to ensure women are safe and welcome in the game.



Each of us have experienced sexist abuse on social media and in person. It is a problem that has been ignored for too long, and one that many are shocked to hear is still a huge problem for many fans.

OUR AIMS.

- **CREATE AWARENESS AND EDUCATE ON SEXISM IN FOOTBALL.**
- **CREATE REGULAR CONTENT TO CHAMPION WOMEN IN THE GAME (PLAYERS, STAFF AND FANS).**
- **CREATE STRONG RELATIONSHIPS WITH CLUBS, TRUSTS AND COMMUNITIES.**
- **HAVE A PRESENCE AT FOOTBALL STADIUMS TO CREATE A SAFER, MORE WELCOMING ENVIRONMENT FOR WOMEN.**
- **CONTINUE TO CAMPAIGN AGAINST ONLINE ABUSE.**

TO REPORT.

Go to www.hergametoo.co.uk/report to report sexist abuse at football. This can be done anonymously.



@HERGAMETOO ON SOCIALS





LOCAL AREA

Shopping:

There are numerous shopping opportunities on offer, to suit every taste and budget, at Drake Circus: Plymouth's main shopping centre. Featuring a plethora of famous high street names, whether you're in need of some retail therapy or a bite to eat, Drake Circus has you covered. Located in the heart of the city centre, Drake Circus lies 2km from Home Park, which is a 5-10 minute drive or an approximate 30 minute walk. For a more unique shopping experience, try the independent shops around the Barbican area, which sell local crafts, goods and gifts.

Accommodation:

There are many options for somewhere to stay in the local area, including independent B&Bs (both close to Home Park and around the Hoe/Barbican areas) and larger chain hotels in and around the City Centre. The closest of these to Home Park is the Cophorne Hotel, situated near Plymouth Train Station.

Food & Drink:

The majority of Plymouth's main restaurants and eateries are in the city centre and Drake Circus shopping centre. There are also lots of fantastic independent restaurants and fish & chip shops around the Barbican and Plymouth Hoe areas, which, if you have time before the game, are fantastic areas for sightseeing and feature stunning views out over Plymouth Sound.

Why not take your experience to new heights by sampling the views from an incredibly unique location, by climbing to the top of Smeaton's Tower, the famous lighthouse on Plymouth Hoe!

If you need any groceries for your return trip home, there is a Morrison's Supermarket just a short drive from Home Park, along Outland Road.

CLUB CONTACTS

How to get in touch:

Stadium Address:

Home Park Stadium
Plymouth
PL2 3DQ

Main Switchboard: 01752 562561

General Enquiries: argyle@paafc.co.uk

Club website: www.paafc.co.uk

Ticket Office:

Web: www.eticketing.co.uk/pafc

Email: tickets@paafc.co.uk

Twitter: @ArgyleTickets

Phone: 01752 907700

Superstore:

Web: www.argylesuperstore.co.uk

Phone: 01752 558292

Disability & Access: disability@paafc.co.uk

Visitor Experience, Family Information & Match

Day Experience Queries:

Email: supporters@paafc.co.uk

Twitter: @PAFC_SLO

Safeguarding: safeguarding@paafc.co.uk

Hospitality & Private Events: hospitality@paafc.co.uk

Commercial & Sponsorship: commercial@paafc.co.uk

Press: media@paafc.co.uk

Club Social Media:

 @Argyle

 @Argyle

 @PlymouthArgyleFC

 @Only1Argyle

On match days, our team are on-hand to help! Look out for our Visitor Experience & Disability Liaison teams, who are visible both inside and outside the stadium before, during and after games. They are easily identifiable through their purple high-vis jackets, and are there to help with all aspects of your match day experience.





THANK YOU FOR VISITING

Thank you for visiting and we hope you enjoyed your time at Home Park.

Here at Plymouth Argyle we are passionate about delivering the best possible match day experience for all supporters, so we would love to hear about your visit. Supporter feedback, comments and suggestions are crucial in highlighting areas where we can enhance the match day experience we offer, so we welcome your thoughts!

Please send any feedback regarding your match day experience to supporters@pafc.co.uk, or you can speak to our Here to Help team (in purple jackets) as you exit the stadium, at the information booth on the edge of the Milehouse Park & Ride car park (open for 15 mins after the full time whistle). Your feedback is crucial in helping us to provide the best services possible to all supporters - thank you.

From all of us here at Plymouth Argyle, we wish you a safe journey home and we hope to see you back at Home Park again soon.



- DROP-OFF POINT
- ACCESSIBLE ENTRANCE
- PARKING
- BABY CHANGING
- ACCESSIBLE TOILET
- MATCH DAY INFORMATION
- TOILET
- RETAIL STAND
- MATCH DAY ROAD CLOSURE